

A photograph of a beach with a rainbow in the sky. The sky is blue with some clouds. The ocean is greenish-blue with white waves. The sand is light brown. There are several seagulls on the beach. The text is overlaid on the image.

Satellite Beach Sea Level Rise
Pilot Project

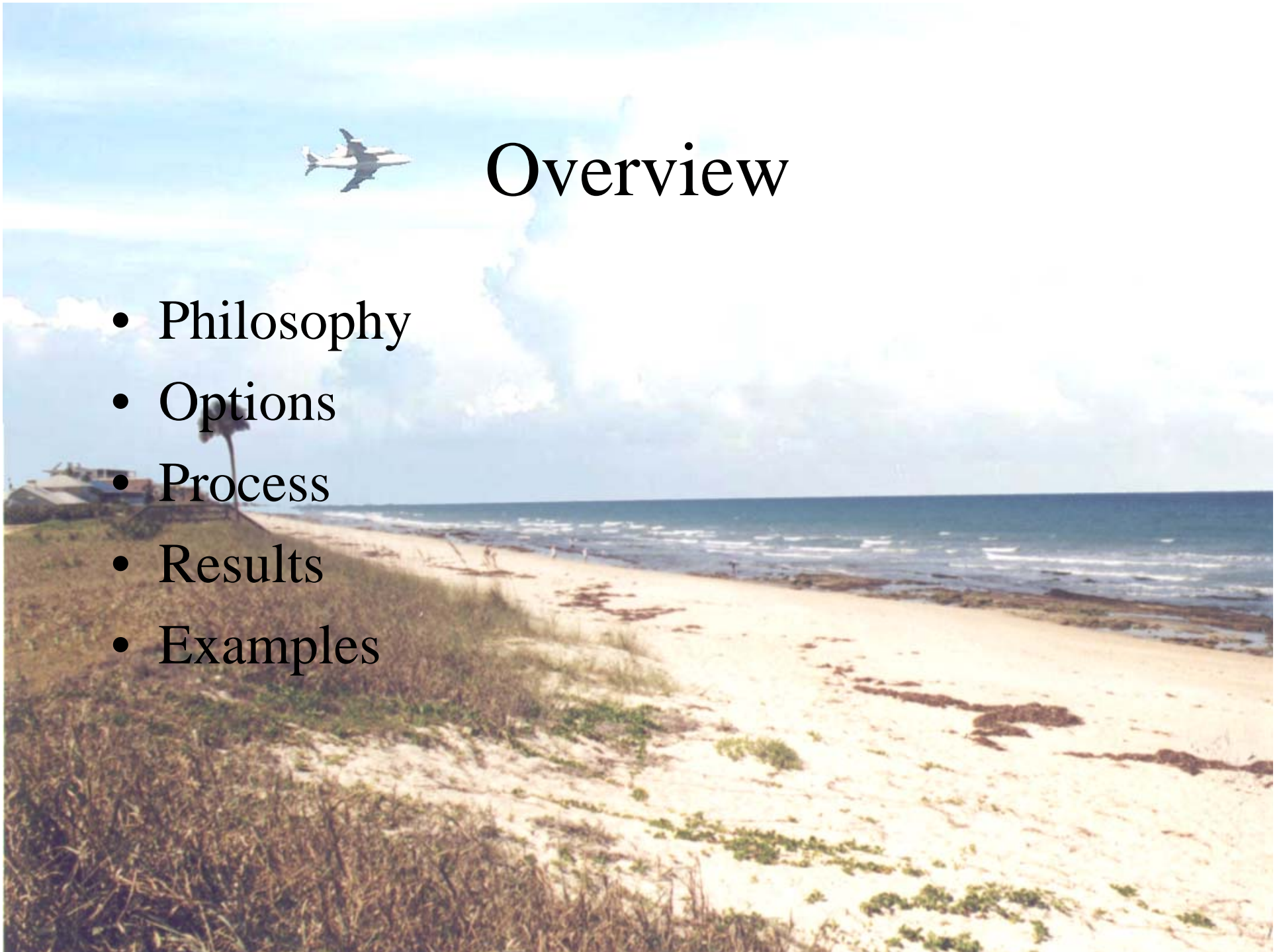
Results

John Fergus



Overview

- Philosophy
- Options
- Process
- Results
- Examples



Philosophy



- Preserve services and property values
- Use adaptive management
 - Be proactive
 - Take a long term perspective (100 years)
 - Look for no-regret/low-regret options
 - Match actions to the situation
 - Adjust plan and actions as more is known

Options

- Ignore (do nothing) (much of the world)
- Abandon (move or eliminate function)(parts of New Orleans)
- Strategic withdrawal (relocate or replace structures)
- Accommodate (repair or rebuild) (much of the world)
- Protect (against flooding/erosion) (Dutch)
- Attack (move into the water body) (Dutch)



Process

- Review technical information
- Review what others have done
- Tailor to Satellite Beach
 - **Chose accommodation and strategic withdrawal**
 - Midpoint of the range of options
 - Doing nothing places the City at-risk
 - Abandonment damages tax base or eliminates City
 - Geology and finances mitigate against protection
 - Regulations eliminate attack

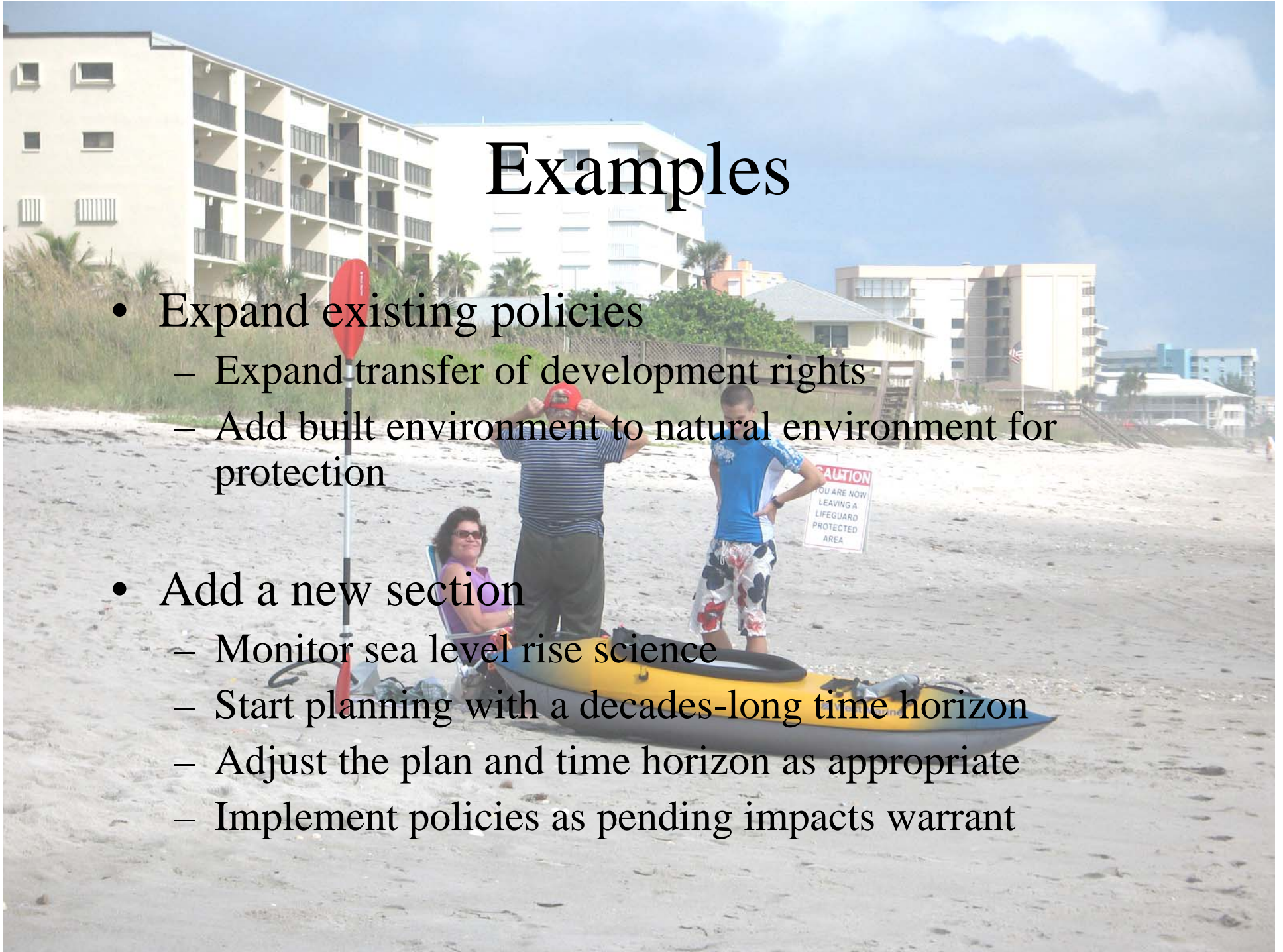
Results

- Proposed Comprehensive Plan Amendments
 - Expand some existing policies to include sea level rise
 - Add a new section addressing adaptive management



Examples

- Expand existing policies
 - Expand transfer of development rights
 - Add built environment to natural environment for protection
- Add a new section
 - Monitor sea level rise science
 - Start planning with a decades-long time horizon
 - Adjust the plan and time horizon as appropriate
 - Implement policies as pending impacts warrant



A photograph of a sunset over the ocean. The sun is low on the horizon, partially obscured by clouds, creating a bright glow and rays of light. The sky is filled with soft, colorful clouds in shades of orange, pink, and blue. The ocean below is a deep blue with gentle waves. The word "Questions?" is written in a large, black, serif font across the center of the image.

Questions?